



THE LONDONER  
LEICESTER SQ.

# A WEST END LOVE STORY



THE PERFECT SETTING FOR  
YOU AND YOUR NEAREST TO  
CELEBRATE UNFORGETTABLE  
MOMENTS IN A TRULY  
MEMORABLE PLACE

Whether you're dreaming of a grand weekend wedding or an elegant ceremony, The Londoner is idyllic for couples aspiring to experience a special occasion in dapper style, with exemplary service to match.

Discover a wonderful stage surrounded by history and architectural elegance – unveiling celebrations set exclusively behind the scenes.



A large, empty ballroom with a checkered floor and a ceiling of stage lights. The room is dimly lit, with the floor reflecting the overhead lights. The walls are covered in a pattern of vertical and horizontal panels, creating a checkered effect. The ceiling is a complex grid of metal trusses with numerous small, round stage lights. The overall atmosphere is elegant and sophisticated.

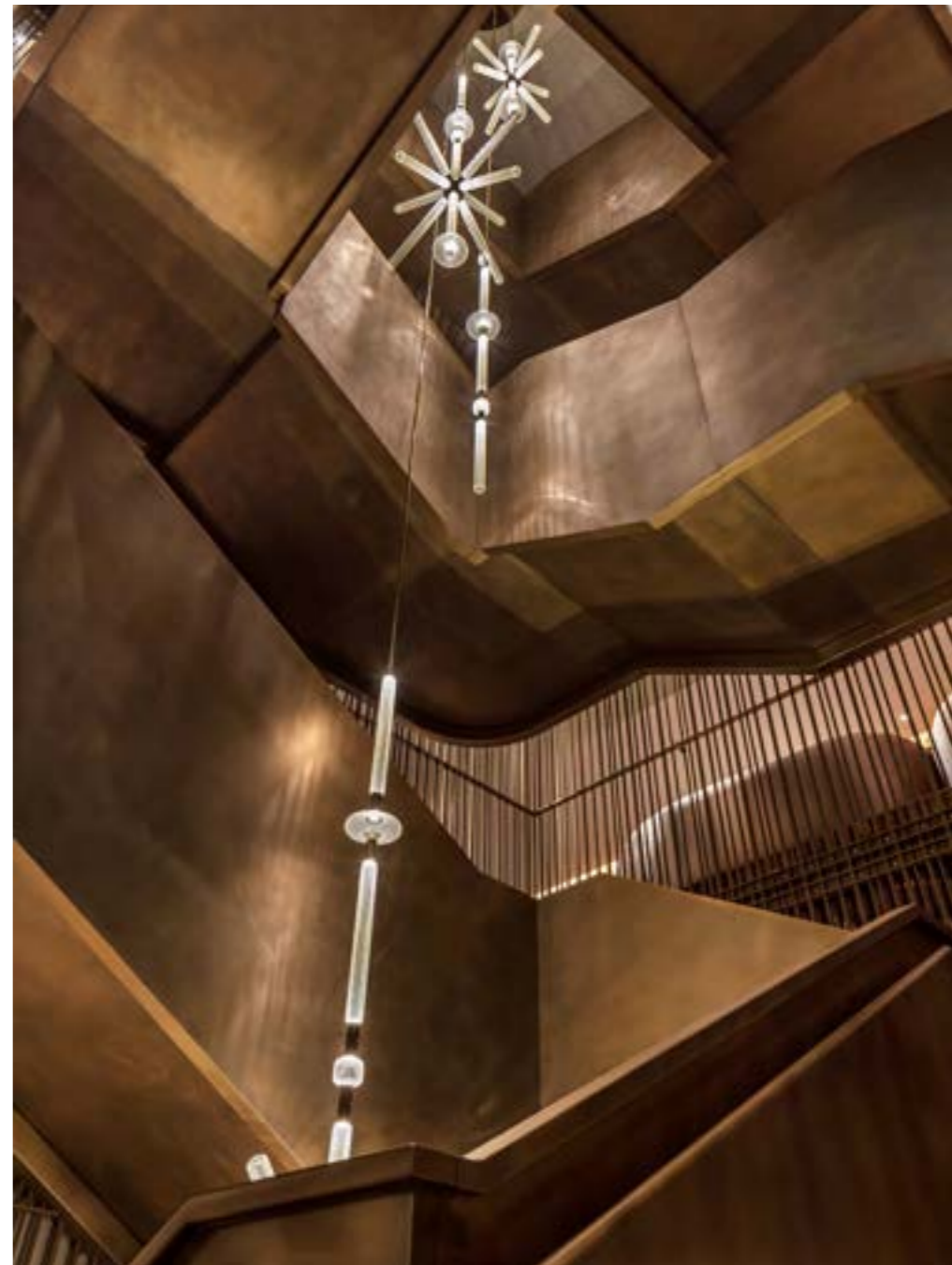
# THE BALLROOM



# A TRUE STATEMENT WEDDING

A soaring canvas of possibilities, The Ballroom lets the imagination run free in a space where contemporary luxe meets the golden age of entertainment.





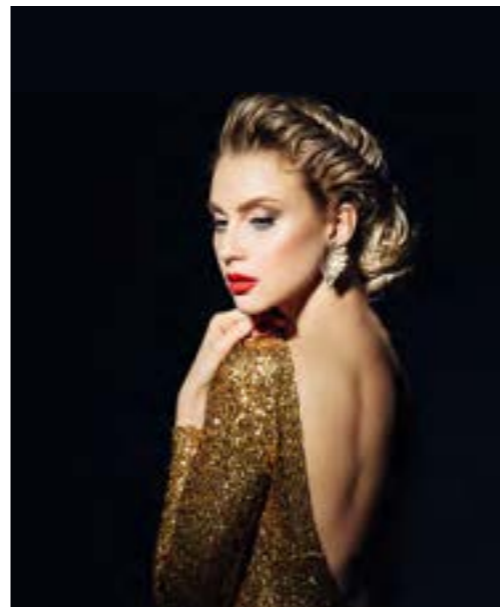
The Ballroom is specifically designed to accommodate beautiful and seamless weddings. Two dedicated kitchens ensure flawless delivery of world-class menus for up to 600 guests. A retractable partition introduces flexibility and spine-tingling surprise reveals. State-of-the-art sound and vision technology sets the scene for a spectacular experience.





# LIFE AND SOUL OF THE PARTY

In The Green Room, a private bar with dance floor and bespoke furnishings present the perfect place for more intimate weddings, cocktail receptions and afterparties.





# INTIMATE MOMENTS

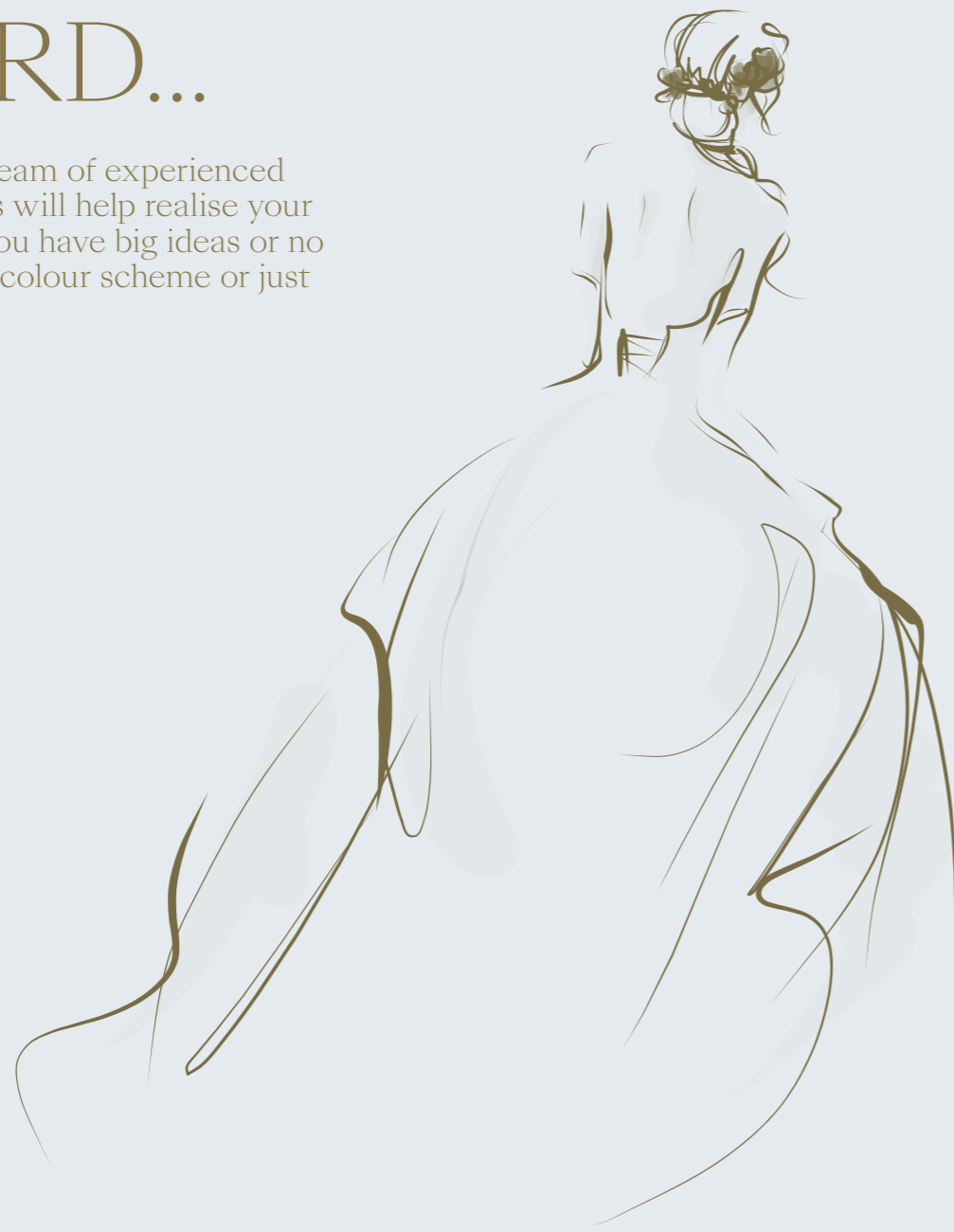
The understated is sometimes the most beautiful. Celebrate with a handful of friends and family in a secluded private dining room or in a tasteful suite with magnificent London views.

Eloping has never been more sublime.



# FROM DRAWING BOARD...

The Londoner's team of experienced wedding planners will help realise your vision, whether you have big ideas or no ideas, a favourite colour scheme or just an abstract motif.



With a marriage licence for every room in The Londoner, ceremonies can be tailored to your taste and party size. Intimate or all-out, your big day will play out in settings that inspire, with unexpected possibilities for subtle and extraordinary effects.





...TO  
FINER  
DETAILS

We are partnered with some of the country's most renowned event production companies and luxury brands to ensure a spectacular experience for you and your guests.

Out-of-this-world floral arrangements. Statement displays. Bespoke details that simply make people smile. Whatever your vision, we will find someone in our network of friends to arrange it.



# A MARRIAGE OF FLAVOUR

Regardless of your needs, our dedicated planners and chefs will help you create the perfect menu for you and your guests.

Inspired by our city's fine cuisines, The Londoner's wedding menus feature fresh, locally sourced ingredients of the highest quality.

Stage a spectacular banquet for 600 in The Ballroom. Discover six carefully prepared World Cuisine Stations, each with delicacies influenced by international dining scenes – featuring celebratory, luxurious complements. Or simply opt for a bespoke dining experience, just the two of you.

We also work with specially handpicked external kosher caterers to ensure the very best dining experience.



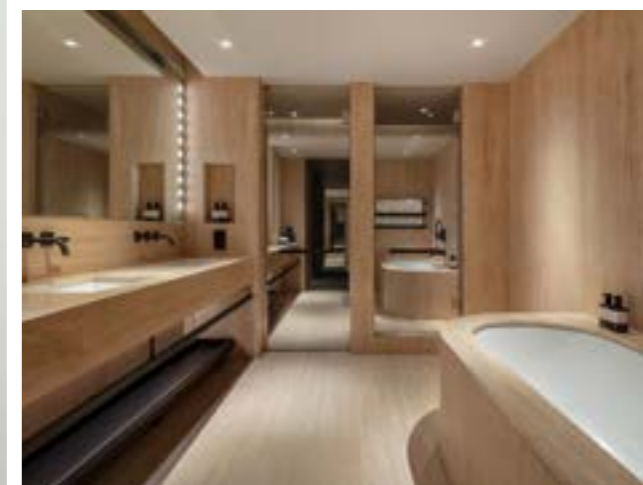


# YOUR BRIDAL SUITE AWAITS

At the end of the night, slip away from the party to your beautiful suite. Complete with luxury amenities and surprises to make the celebration extra special, you will also wake up to a lovely complimentary breakfast the following morning.

As well as complimentary and preferential invitations to our eclectic events, you and your overnight guests will have access to The Residence, a collection of three beautifully designed spaces just for hotel residents.

The Londoner can arrange special rates for wedding guests who wish to stay the night.



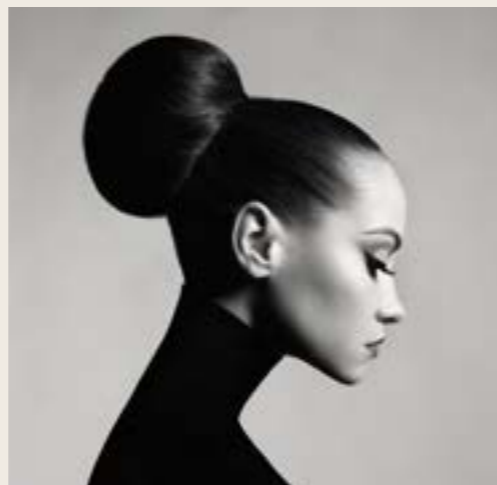


# PAMPERED

The full before and after experience at The Retreat.

Spoil your bridal party in the hair & nail salon. Give the groomsmen a final groom in our barber boutique. Look and feel your best with results-driven selections from the superfood clinic.

The perfect sanctuary to spend the morning after the night before, private poolside cabanas and expert therapists await for debriefs and winding down.





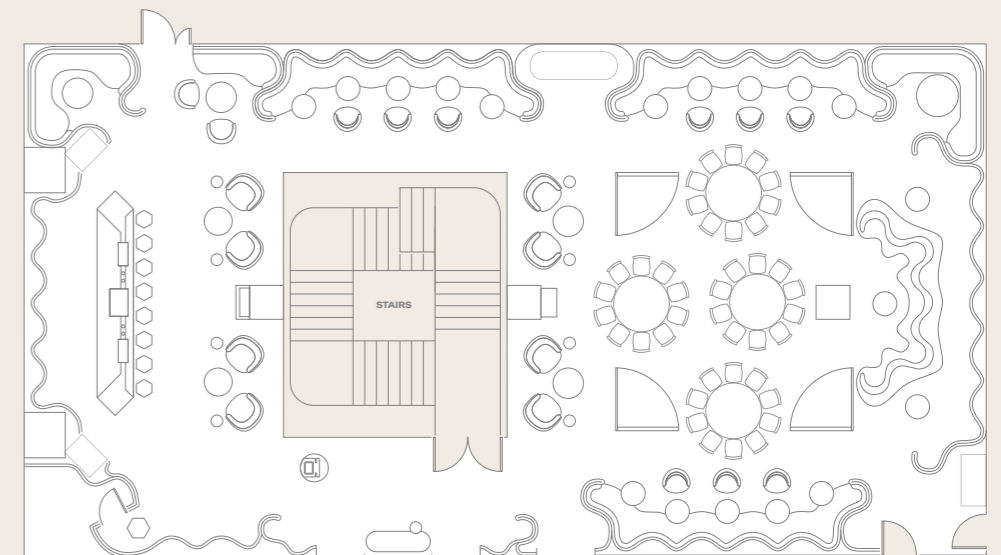
# THE GREEN ROOM

Details and capacities

Capacities	Theatre	Classroom	Boardroom	Cabaret	Lunch/dinner	U-shape	Reception
The Green Room	76	30	28	24	40	20	180

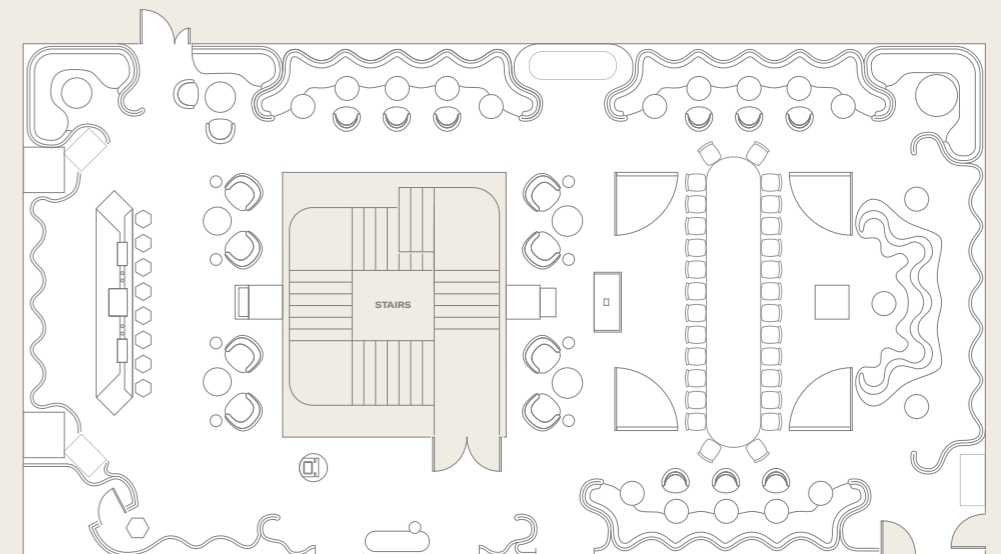
Dimensions	Area		Length		Width		Height	
	sq. m	sq. ft	m	ft	m	ft	m	ft
The Green Room	299	3,214	23.7	77' 8"	12.6	41' 3"	2.2	7' 2"

**Dinner**  
with round tables



4 tables:  
40 guests at 10 per table

**Boardroom**  
with table heads



1 large table:  
28 guests

For more room layouts tailored to your event,  
please email [events@thelondoner.com](mailto:events@thelondoner.com)

Capacity will vary depending on additional  
requirements such as staging or dance floors.



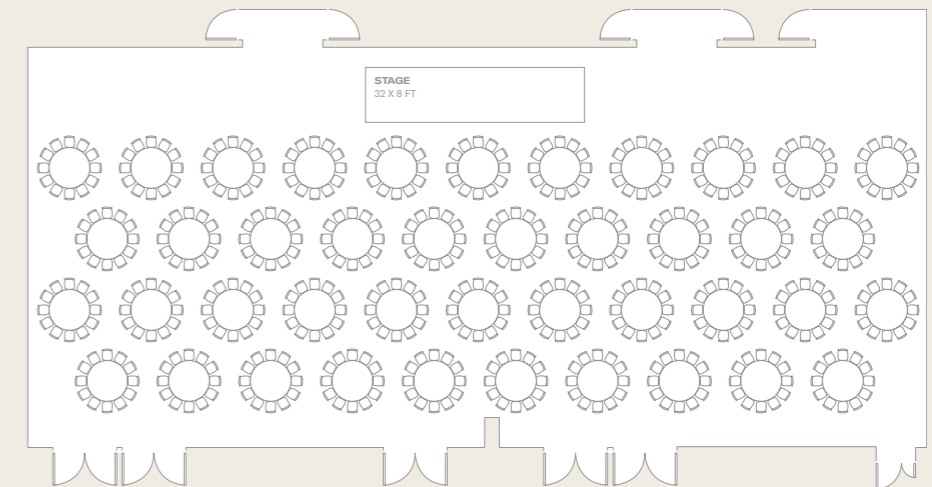
# THE BALLROOM

Details and capacities

Capacities	Theatre	Classroom	Boardroom	Cabaret	Lunch/Dinner	Reception
Ballroom	708	432	-	336	600	850
Ballroom A	367	216	48	216	300	350
Ballroom B	328	216	42	144	276	310
Ballroom Foyer	-	-	-	-	-	200

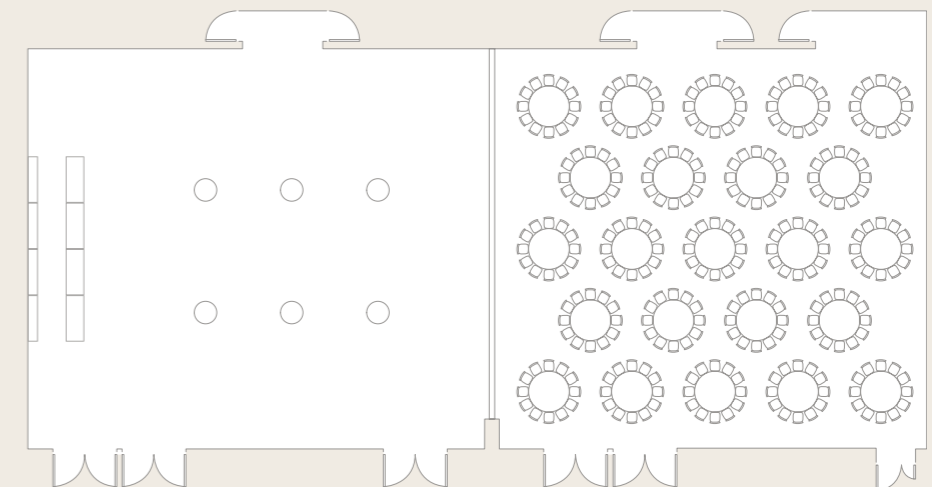
Dimensions	Area		Length		Width		Height	
	sq. m	sq. ft	m	ft	m	ft	m	ft
Ballroom	566	6,093	35.6	116' 8"	15.9	52' 2"	5.8	19'
Ballroom A	289	3,115	18.2	59' 7"	15.9	52' 2"	5.8	19'
Ballroom B	272	2,927	17.1	56' 1"	15.9	52' 2"	5.8	19'
Ballroom Foyer	237	2,551	-	-	-	-	-	-

Dinner  
with stage



42 tables:  
504 capacity at 12 per table  
420 capacity at 10 per table

Reception and Dinner  
with skyfold partition  
creating separate spaces



23 tables:  
276 capacity at 12 guests per table  
230 capacity at 10 guests per table

For more room layouts tailored to your event,  
please email [events@thelondoner.com](mailto:events@thelondoner.com)

Capacity will vary depending on additional  
requirements such as staging or dance floors.



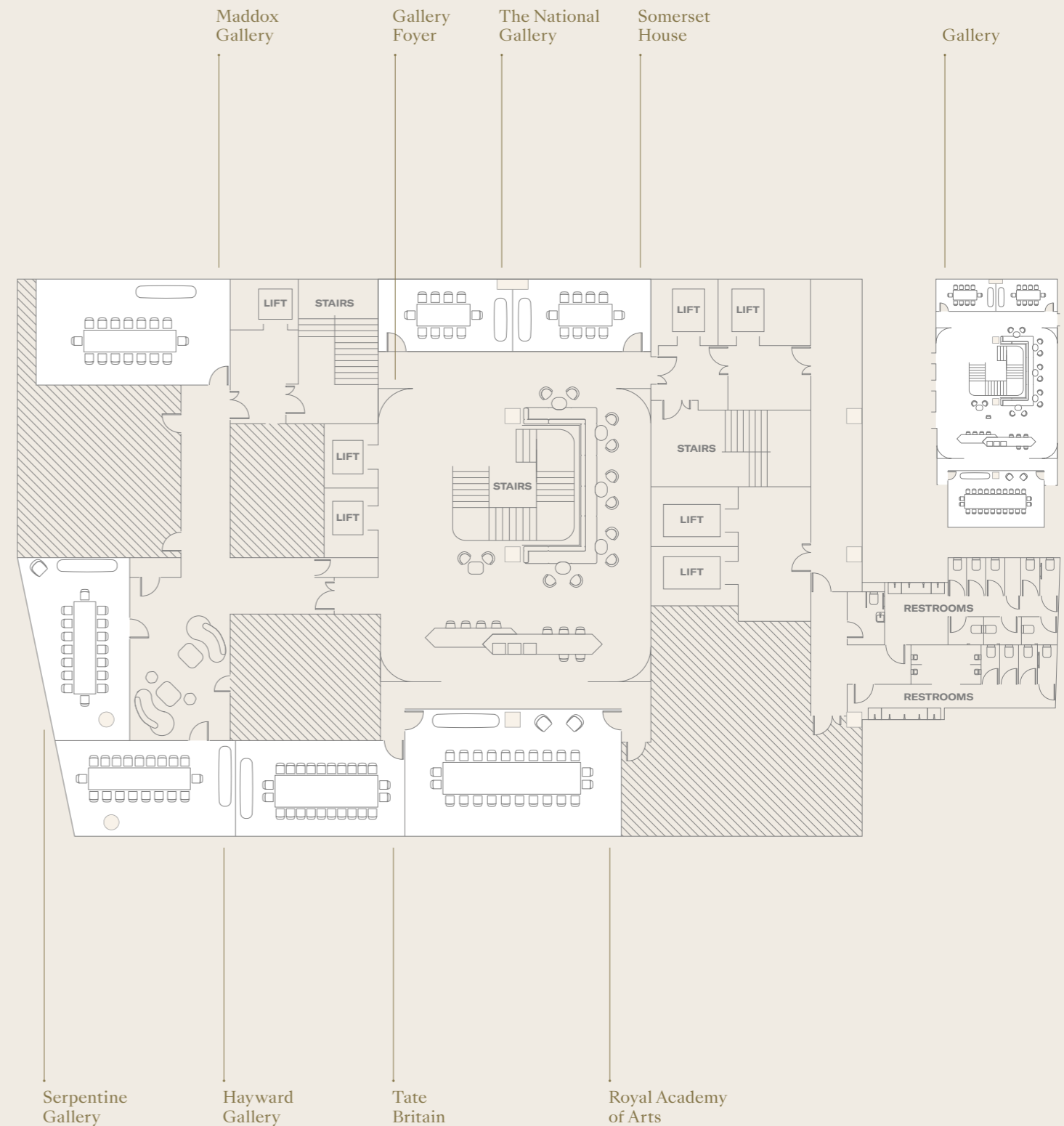
# THE GALLERY

Details and capacities

Capacities	Theatre	Classroom	Boardroom	U-shape	Cabaret	Lunch/Dinner	Reception
The National Gallery	20	9	8	-	-	8	22
Somerset House	20	9	8	-	-	8	22
The National Gallery + Somerset House	48	21	16	27	-	16	44
Royal Academy of Arts	64	36	24	28	24	36	60
Tate Britain	30	24	20	20	16	24	38
Hayward Gallery	34	21	20	16	16	24	38
Tate Britain + Hayward Gallery	82	56	40	44	32	48	76
Serpentine Gallery	-	-	16	-	-	-	-
Maddox Gallery	-	-	16	-	-	-	-

Dimensions	Area		Length		Width		Height	
	sq. m	sq. ft	m	ft	m	ft	m	ft
The National Gallery	20	215	6.2	20' 4"	3.2	10' 6"	3.5	11' 6"
Somerset House	20	215	6.4	21'	3.2	10' 6"	3.5	11' 6"
The National Gallery + Somerset House	40	431	12.6	41' 4"	3.2	10' 6"	3.5	11' 6"
Royal Academy of Arts	54	581	9.9	32' 6"	5.8	19'	3.5	11' 6"
Tate Britain	34	366	7.9	25' 11"	4.2	13' 9"	3.5	11' 6"
Hayward Gallery	34	366	7.9	25' 11"	4.2	13' 9"	3.5	11' 6"
Tate Britain + Hayward Gallery	68	732	15.8	51' 10"	4.2	13' 9"	3.5	11' 6"
Serpentine Gallery	35	377	8.4	27' 7"	4.3	14' 1"	3.5	11' 6"
Maddox Gallery	39	420	8.9	29' 2"	4.6	15' 1"	3.5	11' 6"

Breakout areas	Standing	Area		Length		Width		Height	
	guests	sq.m	sq.m	m	ft	m	ft	m	ft
Gallery Foyer	160	162	1,744	16.8	55'	12.4	40' 6"	3.5	11' 5"
Gallery	275	256	2,756	25.8	84' 5"	12.4	40' 6"	-	-





# WEDDINGS AT THE LONDONER

events@thelondoner.com  
+44 (0)20 7451 0188







THE LONDONER  
LEICESTER SQ.



38 Leicester Square  
London WC2H 7DX  
+44 (0)20 7451 0101  
thelondoner.com